



MONTHLY MEMBERSHIP PROGRESS REPORT

District A 1

Results as of: 7/31/2015

GMT: CHRIS LEWIS

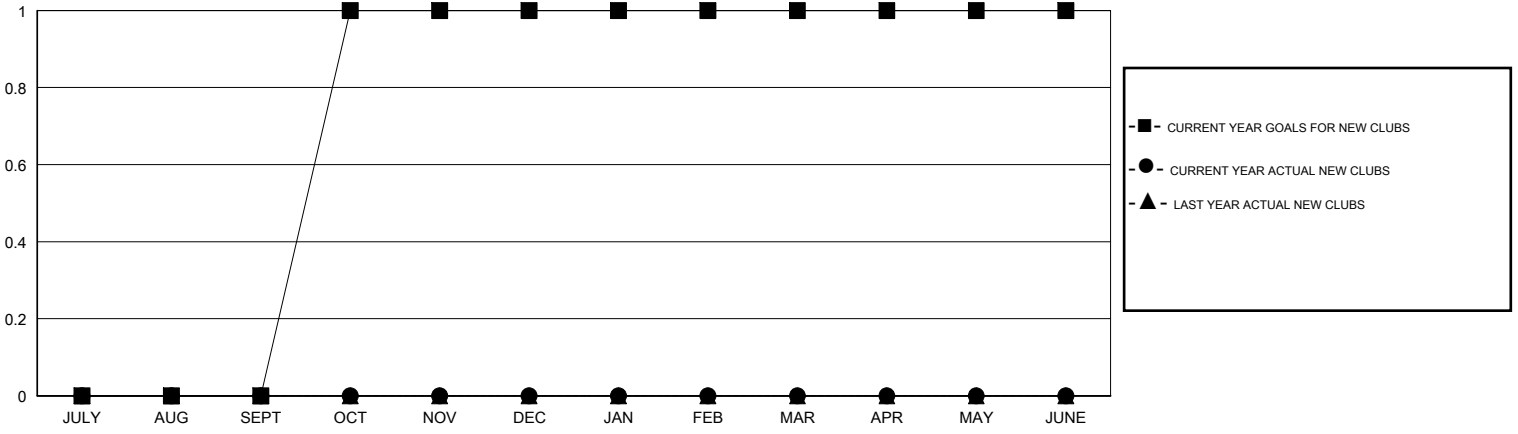
LOCATION ONTARIO

GMT CA 2

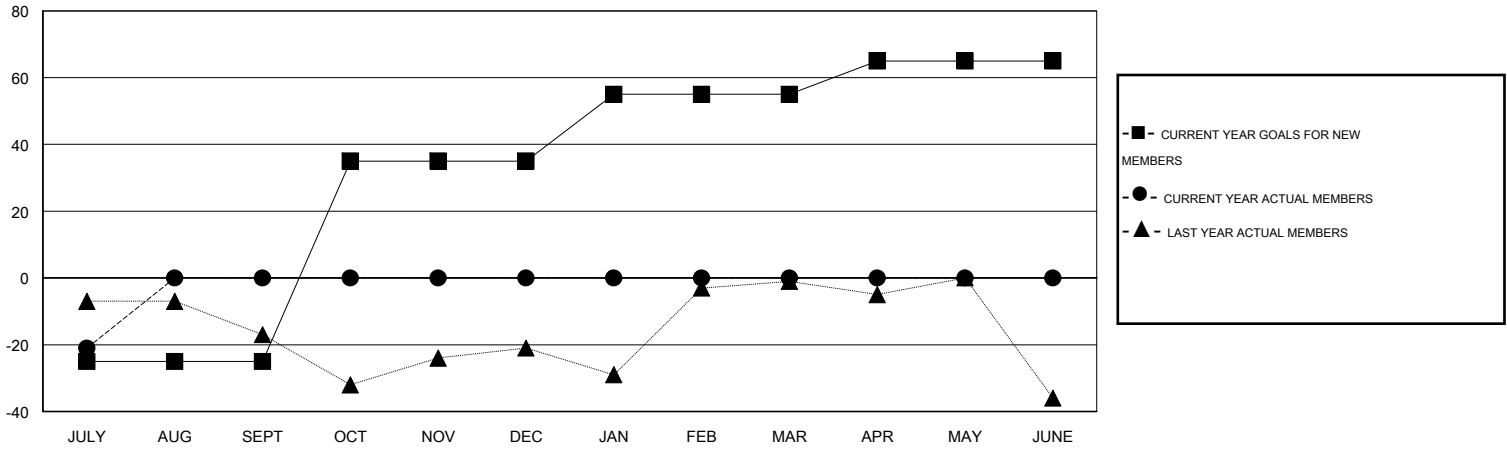
Clubs				
RESULTS FOR 2015-2016				
QUARTER	NEW CLUB GOAL	NEW CLUBS	DROPPED CLUBS	NET GAIN/LOSS
JULY/AUG/SEPT	0	0	0	0
OCT/NOV/DEC	1	0	0	0
JAN/FEB/MAR	0	0	0	0
APR/MAY/JUNE	0	0	0	0

Members				
RESULTS FOR 2015-2016				
QUARTER	NEW MEMBER GOAL	CHARTER AND NEW MEMBERS ADDED	DROPPED MEMBERS	NET GAIN/LOSS
JULY/AUG/SEPT	-25	2	23	-21
OCT/NOV/DEC	60	0	0	0
JAN/FEB/MAR	20	0	0	0
APR/MAY/JUNE	10	0	0	0

GOALS AND ACTUAL NEW CLUBS CUMULATIVE



GOALS AND ACTUAL MEMBERS CUMULATIVE



DROPPED CLUBS: 0

2 CLUBS OF 44 ADDED 1 OR MORE NEW MEMBERS

GENDER DISTRIBUTION	
MALE	1,011 (81.34%)
FEMALE	232 (18.66%)

DROPPED MEMBERS	
DECEASED	2
CLUB CANCELLED	0
OTHER	21
TOTAL	23

[CLICK HERE FOR HEALTH ASSESSMENT DATA](#)

FAMILY UNIT MEMBERS	187
HEAD OF HOUSEHOLD	92
NON-HEAD OF HOUSEHOLD	95